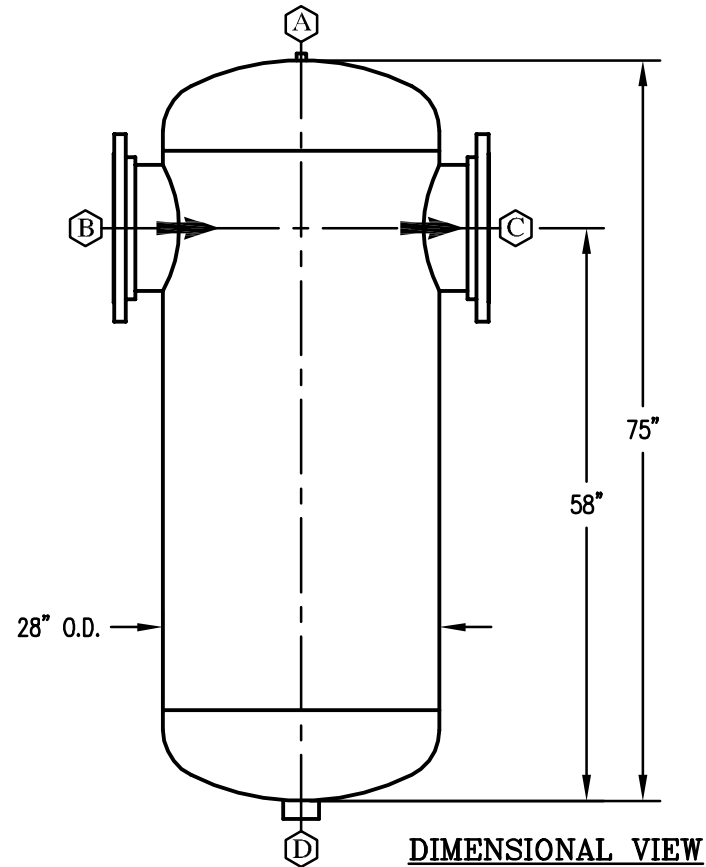


**TOP ORIENTATION VIEW**



**DIMENSIONAL VIEW**

NOZZLE SCHEDULE				
MARK	SIZE	SPEC	NOZ. TYPE	FUNCTION
A	1/4"	6000#	CPLG	VENT
B	12"	150#	R.F.S.O.	INLET
C	12"	150#	R.F.S.O.	OUTLET
D	2 1/2"	3000#	CPLG	DRAIN


NOTE: 1. DESIGNED, FABRICATED, AND STAMPED IN ACCORDANCE WITH ASME CODE SECTION VII, DIV. 1.

2. SEPERATORS AVAILABLE IN CARBON STEEL, 304 & 316 STAINLESS STEEL, OR OPTIONAL ALLOYS UPON REQUEST.

3. ALL DIMENSIONS ARE IN INCHES

4. APPROXIMATE WEIGHT 1,125 LBS

REVISION: 0				
NO.	DESCRIPTION	BY DATE	NO.	DESCRIPTION

<b>CONSTRUCTION</b> A.S.M.E. SECTION VIII DIVISION I A.S.M.E. U1 STAMP REQUIRED		<b>DIDION SEPARATOR COMPANY</b> A DIVISION OF  <b>DIDION'S MECHANICAL</b> <i>NOT BIGGEST...BEST!</i>			
PH: (419) 483-2226 FX: (419) 483-4382		WEB: didionseparator.com e-mail: dmech@didionamech.com		DESCRIPTION: HORIZONTAL FLOW SEPARATOR MODEL#: DST-12-150	
<b>DESIGN SPECIFICATIONS</b>		SALES DRAWING			
DES. PRESS.	150 PSIG	DRWN. JLD	DATE: 04-15-10	APPR.	DATE:
DES. TEMP.	500° F.	CHK.	DATE:	APPR.	DATE:
FULL VACUUM	YES	SCALE:	DRAWING NUMBER		REV.
CORR. ALL.	1/16"	D.M. NO.	DST-12-150-SALES		0
HYDRO. TEST	195 PSIG	P.O. NO.			
STRESS REL.	NONE REQ'D			SHEET NO. 1 OF 1	
RADIOGRAPH	NONE REQ'D	THIS DRAWING AND ALL INFORMATION ON IT IS THE PROPERTY OF DIDION'S MECHANICAL. IT IS CONFIDENTIAL AND IS GIVEN TO YOU FOR A LIMITED PURPOSE AND MUST BE RETURNED ON REQUEST. NEITHER THIS DRAWING NOR ANY PART OF IT NOR ANY INFORMATION CONCERNING IT MAY BE COPIED, EXHIBITED OR FURNISHED TO OTHERS NOR MAY PHOTOGRAPHS BE TAKEN OF ANY ARTICLE FABRICATED OR ASSEMBLED FROM THIS DRAWING WITHOUT CONSENT OF DIDION'S MECHANICAL.			
M.D.M.T	-20° F. @ 150 PSIG				