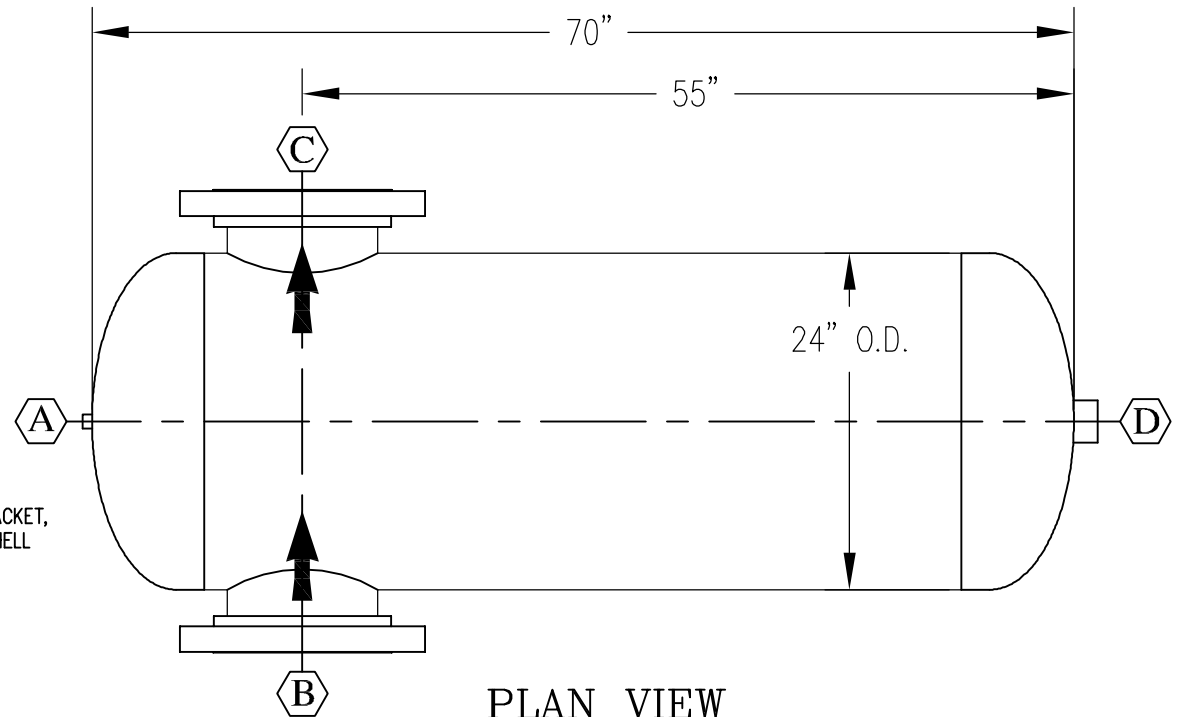


ORIENTATION



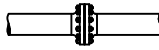
NOZZLE SCHEDULE				
MARK	SIZE	SPEC	NOZ. TYPE	FUNCTION
A	1/4"	6000#	CPLG	VENT
B	10"	300#	R.F.S.O.	INLET
C	10"	300#	R.F.S.O.	OUTLET
D	2"	3000#	CPLG	DRAIN

NOTE: 1. DESIGNED, FABRICATED AND STAMPED IN ACCORDANCE WITH ASME CODE SECTION VIII, DIV. 1.

2. SEPARATORS AVAILABLE IN CARBON STEEL, 304 & 316 STAINLESS STEEL, OR OPTIONAL ALLOYS UPON REQUEST.

3. ALL DIMENSIONS ARE IN INCHES

4. APPROXIMATE WEIGHT 1,507 LBS

REVISION: 0				
NO.	DESCRIPTION	BY DATE	NO.	DESCRIPTION
DIDION SEPARATOR COMPANY A DIVISION OF				
				
DIDION'S MECHANICAL			WEB: didionseparator.com	
PH: (419) 483-2226			e-mail: dmech@didionsmech.com	
FX: (419) 483-4382			NOT BIGGEST....BEST!	
DESCRIPTION: HORIZONTAL FLOW SEPARATOR				
MODEL#: DST-10-300				
SALES DRAWING				
DRWN. JLD	DATE: 04-15-10	APPR.	DATE:	
CHK.	DATE:	APPR.	DATE:	
FULL VACUUM	YES	SCALE:	DRAWING NUMBER	
CORR. ALL.	1/16"	D.M. NO.	DST-10-300-SALES	REV. 0
HYDRO. TEST	650 PSIG	P.O. NO.		SHEET NO. 1 OF 1
STRESS REL.	NONE REQ'D	THIS DRAWING AND ALL INFORMATION ON IT IS THE PROPERTY OF DIDION'S MECHANICAL. IT IS CONFIDENTIAL AND IS GIVEN TO YOU FOR A LIMITED PURPOSE AND MUST BE RETURNED ON REQUEST. NEITHER THIS DRAWING NOR ANY PART OF IT NOR ANY INFORMATION CONCERNING IT MAY BE COPIED, EXHIBITED OR FURNISHED TO OTHERS NOR MAY PHOTOGRAPHS BE TAKEN OF ANY ARTICLE FABRICATED OR ASSEMBLED FROM THIS DRAWING WITHOUT CONSENT OF DIDION'S MECHANICAL.		
RADIOGRAPH	NONE REQ'D			
M.D.M.T	-20° F. @ 500 PSIG			

CONSTRUCTION
A.S.M.E. SECTION VIII DIVISION I
2013 EDITION
A.S.M.E. -U1 STAMP REQUIRED

DESIGN SPECIFICATIONS

DES. PRESS.	500 PSIG
DES. TEMP.	650° F.
FULL VACUUM	YES
CORR. ALL.	1/16"
HYDRO. TEST	650 PSIG
STRESS REL.	NONE REQ'D
RADIOGRAPH	NONE REQ'D
M.D.M.T	-20° F. @ 500 PSIG