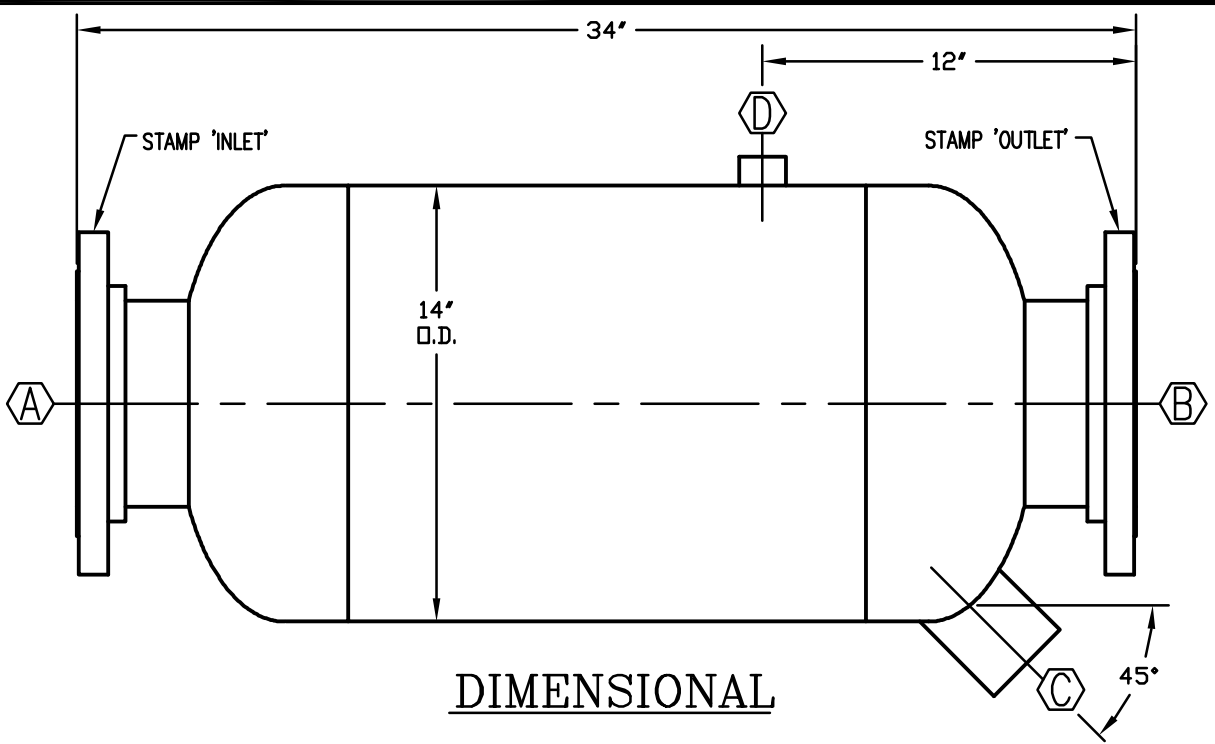


**ORIENTATION**

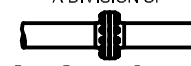
NOZZLE SCHEDULE					
MARK	SIZE	WALL THK.	NOZ. TYPE	RTG-PSI	FUNCTION
A	6"	.280"	RF-SO	150	INLET
B	6"	.280"	RF-SO	150	OUTLET
C	2"	--	FULL CPLG	3000	DRAIN
D	1/2"	--	HALF CPLG	6000	VENT

- NOTES:
1. FLANGE BOLT HOLES TO STRADDLE VESSEL Q'S.
  2. APPROX. WEIGHT:
    - a. DRY-230 lbs.
    - b. FLOODED(WATER)-354 lbs.
  3. UNIT IS PAINTED WITH A HIGH HEAT RESISTANT PAINT, SAFETY BLUE.



**DIMENSIONAL**

CONSTRUCTION	
A.S.M.E. SECTION VIII DIVISION I	
A.S.M.E. U-1 STAMP REQUIRED	
DESIGN SPECIFICATIONS	
DES. PRESS.	150 PSIG
DES. TEMP.	500° F.
VACUUM FULL	YES
CORR. ALL.	1/16"
HYDRO. TEST	195 PSIG
STRESS REL.	NONE REQ'D
RADIOGRAPH	NONE REQ'D
M.D.M.T	-20° F. @ 150 PSIG

REVISION: 0					
NO.	DESCRIPTION	BY DATE	NO.	DESCRIPTION	BY DATE
<b>DIDION SEPARATOR COMPANY</b> A DIVISION OF  <b>DIDION'S MECHANICAL</b> <i>NOT BIGGEST....BEST!</i>					
PH: (419) 483-2226		FX: (419) 483-4382		WEB: didionseparator.com	
				e-mail: dmech@didionsmech.com	
DESCRIPTION: HORIZONTAL/DOWN FLOW SEPARATOR					
MODEL #DSL-6-150					
DRWN. JLD	DATE: 03/22/10	APPR.	DATE:		
CHK.	DATE:	APPR.	DATE:		
SCALE:	DRAWING NUMBER			REV.	SHEET
D.M. NO.	DSL-6-150-SALES			0	NO. 1
P.O. NO.					OF 1