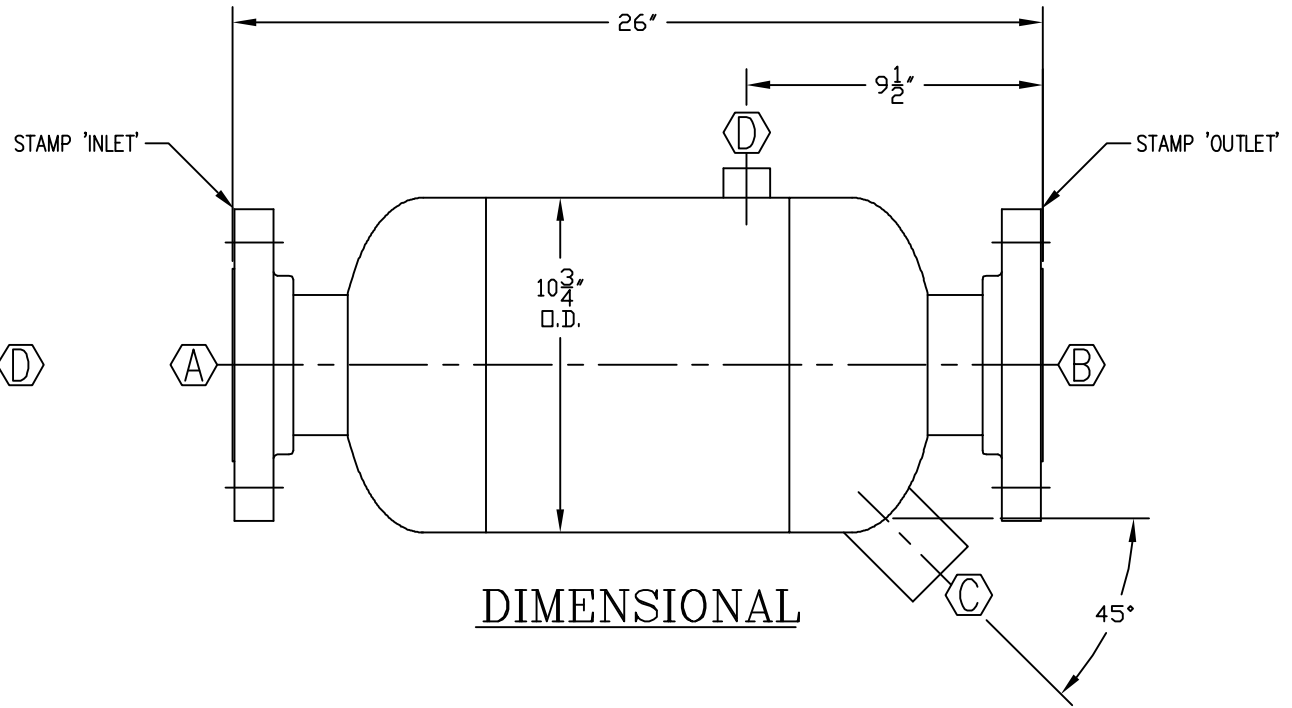


ORIENTATION

| NOZZLE SCHEDULE | | | | | |
|-----------------|--------|-----------|-----------|---------|----------|
| MARK | SIZE | WALL THK. | NOZ. TYPE | RTG-PSI | FUNCTION |
| A | 4" | .237" | RF-SO | 300 | INLET |
| B | 4" | .237" | RF-SO | 300 | OUTLET |
| C | 1 1/2" | -- | FULL CPLG | 3000 | DRAIN |
| D | 1/2" | -- | HALF CPLG | 6000 | VENT |

NOTES:

1. FLANGE BOLT HOLES TO STRADDLE VESSEL Q'S.
2. APPROX. WEIGHT:
 - a. DRY-145 lbs.
 - b. FLOODED(WATER)-193 lbs.
3. UNIT IS PAINTED WITH A HIGH HEAT RESISTANT PAINT, SAFETY BLUE.



| CONSTRUCTION | |
|--|--------------------|
| A.S.M.E. SECTION VIII DIVISION I 2013 EDITION | |
| A.S.M.E. -U1 STAMP REQUIRED | |
| DESIGN SPECIFICATIONS | |
| DES. PRESS. | 500 PSIG |
| DES. TEMP. | 650° F. |
| FULL VACUUM | YES |
| CORR. ALL. | 1/16" |
| HYDRO. TEST | 650 PSIG |
| STRESS REL. | NONE REQ'D |
| RADIOGRAPH | NONE REQ'D |
| M.D.M.T | -20° F. @ 500 PSIG |

| REVISION: 0 | | | | | |
|-------------|-------------|---------|-----|-------------|---------|
| NO. | DESCRIPTION | BY DATE | NO. | DESCRIPTION | BY DATE |
| | | | | | |

DIDION SEPARATOR COMPANY

A DIVISION OF



DIDION'S MECHANICAL

NOT BIGGEST....BEST!

WEB: didionseparator.com
e-mail: dmech@didionsmech.com

PH: (419) 483-2226
FX: (419) 483-4382

DESCRIPTION: HORIZONTAL/DOWN FLOW SEPARATOR

MODEL#: DSL-4-300

| | | | |
|-----------|-----------------|-------|------------------|
| DRWN. JLD | DATE: 03/18/10 | APPR. | DATE: |
| CHK. | DATE: | APPR. | DATE: |
| SCALE: | DRAWING NUMBER | | REV. |
| D.M. NO. | DSL-4-300-SALES | | 0 |
| P.O. NO. | | | SHEET NO. 1 OF 1 |